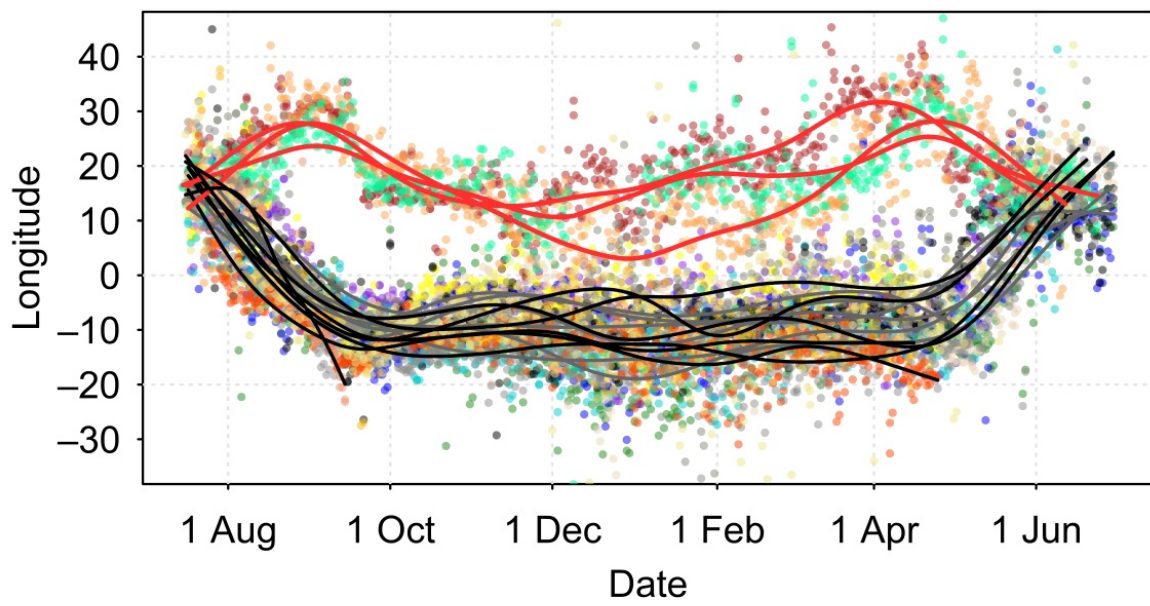


Procházka, P., Brlík, V., Yohannes, E., Meister, B., Auerswald, J., Ilieva, M. and Hahn, S. 2018. Across a migratory divide: divergent migration directions and non-breeding grounds of Eurasian reed warblers revealed by geolocators and stable isotopes. – J. Avian Biol. doi: 10.1111/jav.01769

Supplementary material

1 Appendix 1

2 Figure A1. Temporal changes of estimated longitude of 6 reed warblers from Germany and 10 from
3 the Czech Republic. The lines represent smoothed longitude estimates, grey lines: birds from
4 Germany, black lines: SW-migrating birds from the Czech Republic, red lines: SE-migrating birds
5 tagged from the Czech Republic. Note that in one Czech bird, the geolocator worked only until 15
6 September.



7

8

Table A1. The number of geolocator-tagged and control reed warblers, mean body mass, number of recaptured individuals, geolocator type and harness type used at each study site for each sex in each year. For details on geolocator and harness types see Methods. Asterisks indicate a control group shared by two geolocator-tagged groups.

Country	Site (Person deploying geolocators)	Year attached	Sex	# tagged	# control	Returned tagged	Returned control	# lost geolocators	Body mass tagged	Body mass controls	Geolocator type	Relative load (%)	Harness flexibility
Germany	Plothen (J. Auerswald)	2012	M	30	8	5	0	1	11.8	NA	GDL2.0	5.21	flexible
Germany	Rohrbach (B. Meister)	2012	M	22	2	2	1	0	11.5	12.6	GDL2.0	5.36	flexible
Germany	Rohrbach (B. Meister)	2012	F	7 (+ 1 N)	11	0	0	0	12.7	12.0	GDL2.0	4.86	flexible
Czech Republic	Mutěnice (P. Procházka)	2012	M	36	13	7	5	0	11.7	11.1	GDL2.0	5.14	flexible
Czech Republic	Mutěnice (P. Procházka)	2012	F	14	7	0	1	0	12.3	11.4	GDL2.0	4.89	flexible
Czech Republic	Mutěnice (P. Procházka)	2013	M	52	32	10	12	6	11.8	11.9	GDL2.0	5.11	flexible
Czech Republic	Mutěnice (P. Procházka)	2014	M	44	26	3	7	1	11.9	11.6	GDL2.0	5.04	flexible
Bulgaria	Durankulak (M. Ilieva)	2012	M	34	16	0	1	0	11.6	11.15	GDL2.0	5.23	flexible
Bulgaria	Durankulak (M. Ilieva)	2012	F	16	7	0	0	0	11.82	11.86	GDL2.0	5.13	flexible
Bulgaria	Durankulak (M. Ilieva)	2014	M	41	11	1	0	1	11.7	11.4	GDL2.0	5.21	flexible
Bulgaria	Durankulak (M. Ilieva)	2014	F	6	5	0	0	0	12.2	12.5	GDL2.0	5.00	flexible
Bulgaria	Shabla (M. Ilieva)	2014	M	13	5	0	0	0	11.7	11.4	GDL2.0	5.21	flexible
Bulgaria	Shabla (M. Ilieva)	2014	F	3	0	0	0	0	11.6	–	GDL2.0	5.26	flexible
Bulgaria	Durankulak (M. Ilieva)	2015	M	25	31	0	3	0	12.1	11.8	P50Z11-7-DIP	3.97	non-flexible
Bulgaria	Shabla (M. Ilieva)	2015	M	15	30*	0	2*	0	11.9	11.3*	P50Z11-7-DIP	4.03	non-flexible
Bulgaria	Shabla (M. Ilieva)	2015	M	9	30*	0	2*	0	11.9	11.3*	GDL2.0	5.18	non-flexible