

Supplementary material

Appendix 1

Figure A1. Positioning of landmarks and semi-landmarks used in geometric morphometric analysis on a male *Emberiza schoeniclus witherbyi*.

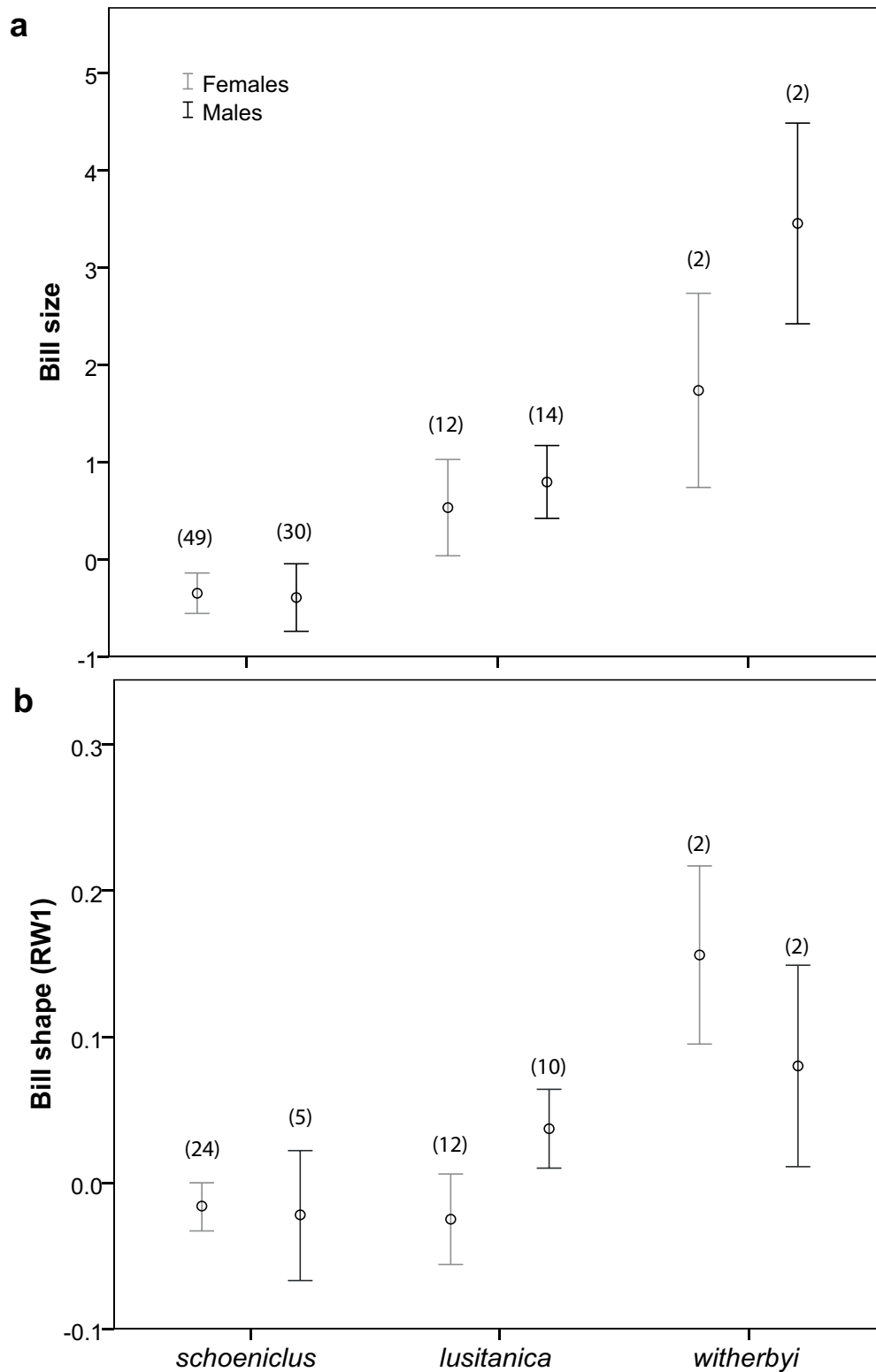


Figure A2. Estimated marginal means (EMM) and 95% confidence interval of a) bill size (PCbill) and b) bill shape (RW1) for each subspecies and sex of Iberian Reed buntings. EMMs were derived from a general linear model that included body size (PCsize) as a covariate. As there was no significant effect of site, *E. s. schoeniclus* trapped in Spain and Portugal were grouped. Sample size is indicated between parenthesis and statistics are described in the main text. Birds trapped in France were analysed separately and are described in Fig. A3.

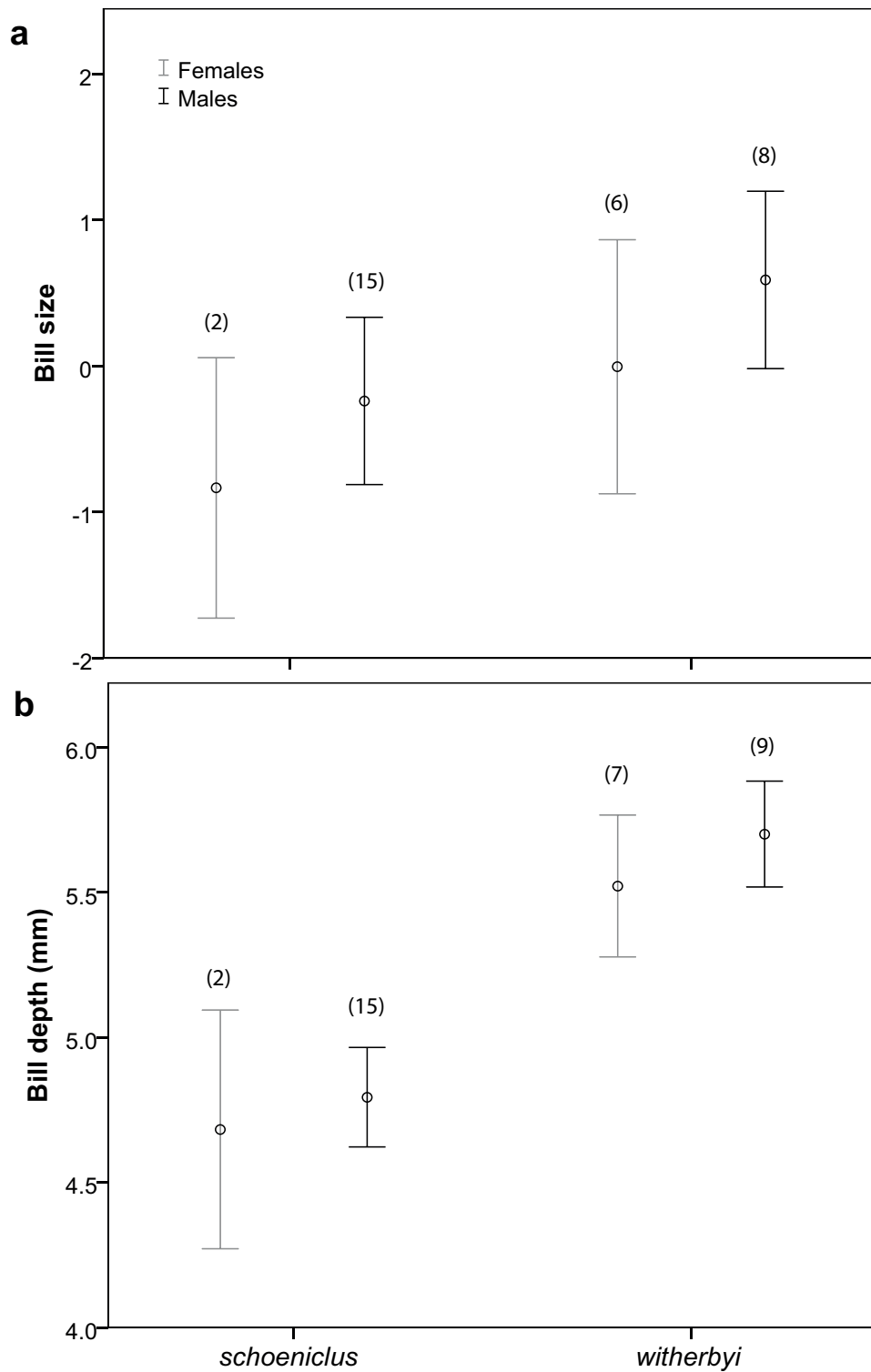


Figure A3. Estimated marginal means (EMM) and 95% confidence interval of a) bill size and b) bill depth of French birds, for each subspecies and sex. Sample size is indicated between parenthesis and statistics are described in the main text.

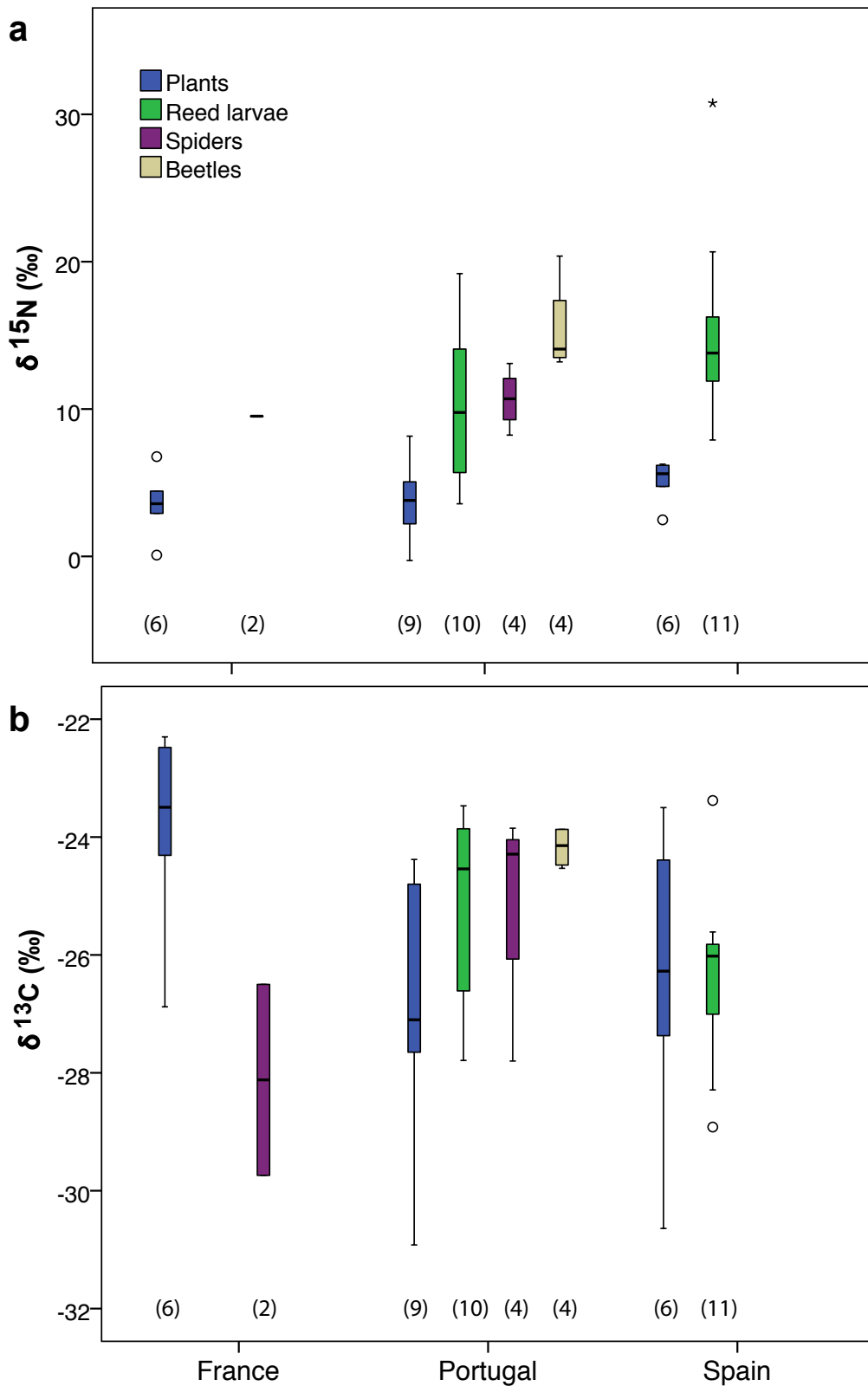


Figure A4. Boxplot showing variation in a) and b) of the various food items for each site. Medians (lines) and interquartile ranges (IQR; boxes) are shown, together with outliers greater than 1.5xIQR (circles) and greater than 3xIQR (asterisks). Sample size is indicated between parentheses.