

**Supplementary material**

**Appendix 1**

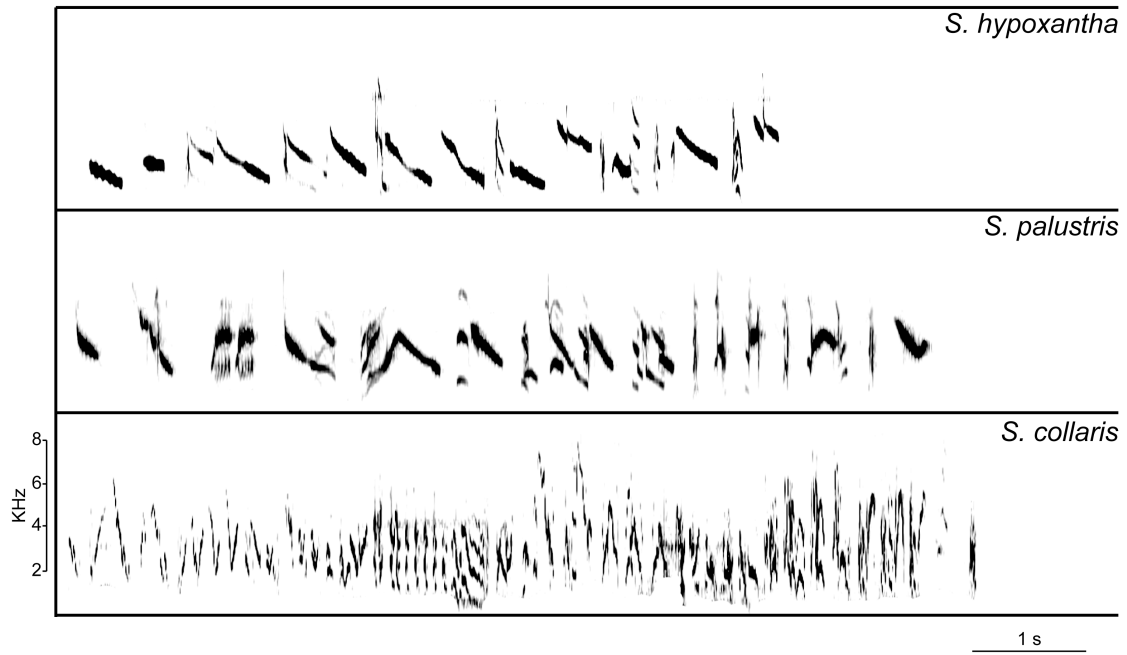


FIGURE A1: Representative sonograms derived from an *S. hypoxantha*, *S. palustris* or *S. collaris* song.



FIGURE A3: Response of *S. hypoxantha* and *S. palustris* males to playback with different song stimuli during the PostPlayback (PostPB) experimental stage. These results are summarized in Figures 2, 3 and 4 in the main text but presented here as individual graphs. Columns correspond to *S. hypoxantha* and *S. palustris* in Colonia Carlos Pellegrini (CCP), and *S. hypoxantha* in El Bagual (EB). Rows show response variables Flights, Songs, and variables related to the distance to the speaker. For *S. hypoxantha* in both CCP and EB, OWN: song of *S. hypoxantha*; CAPUCHINO: song of *S. palustris*; RUSTY: song of *S. collaris*. For *S. palustris*, OWN: song of *S. palustris*; CAPUCHINO: song of *S. hypoxantha*; RUSTY: song of *S. collaris*. Significant  $p$  values denoted with asterisks as follows: \* =  $p < 0.05$ ; \*\* =  $p < 0.01$ ; \*\*\* =  $p < 0.005$ ; \*\*\*\* =  $p < 0.001$ !