

Ma, Z., Hua, N., Peng, H., Choi, C., Battley, P. F., Zhou, Q., Chen, Y., Ma, Q., Jia, N., Xue, W., Bai, Q., Wu, W., Feng, X. and Tang, C. 2013. Differentiating between stopover and staging sites: functions of the southern and northern Yellow Sea for long-distance migratory shorebirds. – J. Avian Biol. 00: 000–000.

## Appendix 1

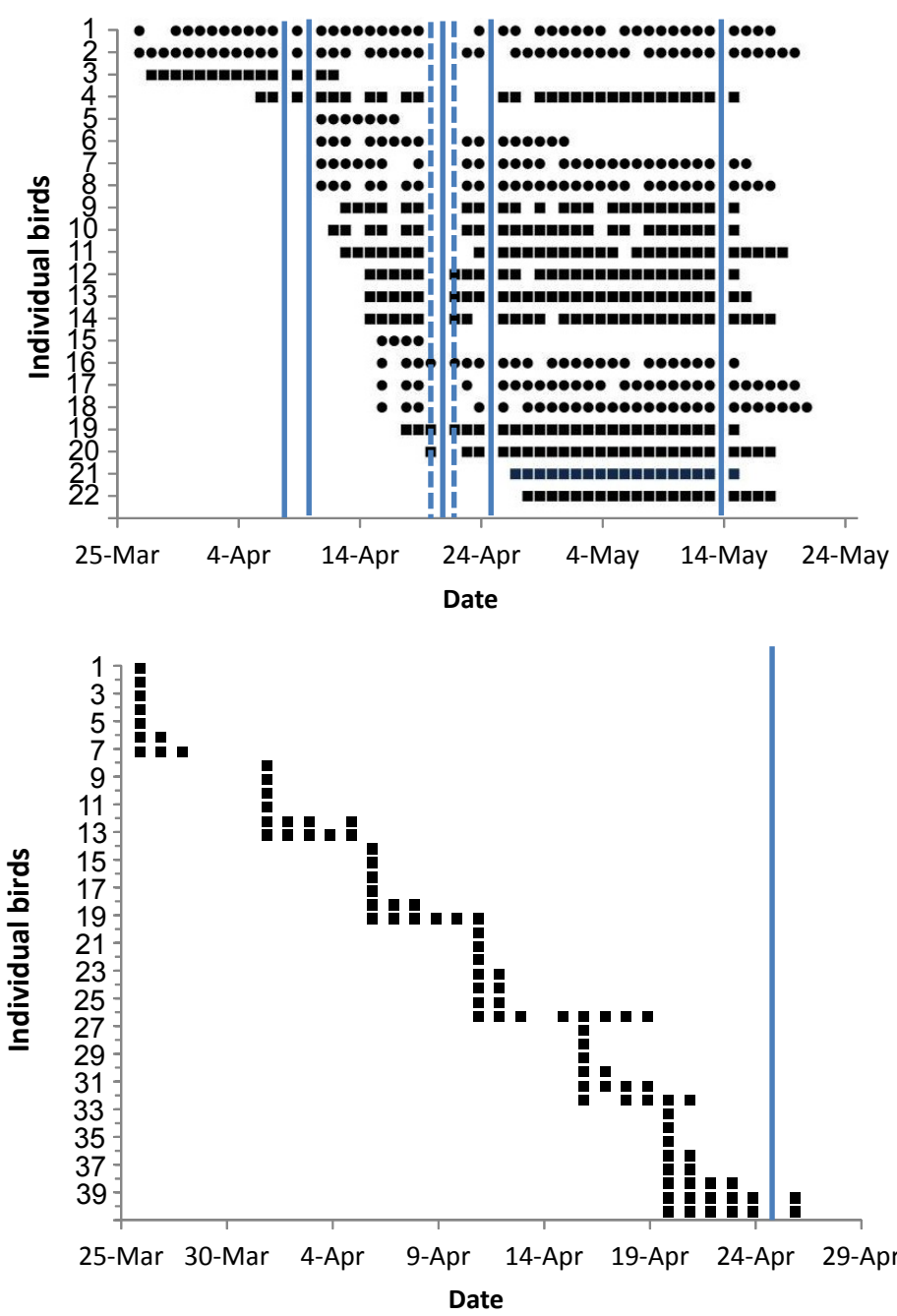


Figure A1. Encounter histories of radio-tagged great knots at Yalu Estuarine Wetland Nature Reserve (YLE, up,  $n = 22$ ) and Chongming Dongtan Nature Reserve (CMDT, down,  $n = 40$ ). Squares indicate individuals tagged at CMDT (some were recorded again at YLE) and circles indicate individuals tagged at YLE. Filled vertical lines indicate tracking suspended in rain and dashed vertical lines indicate tracking covered only part of the study area.

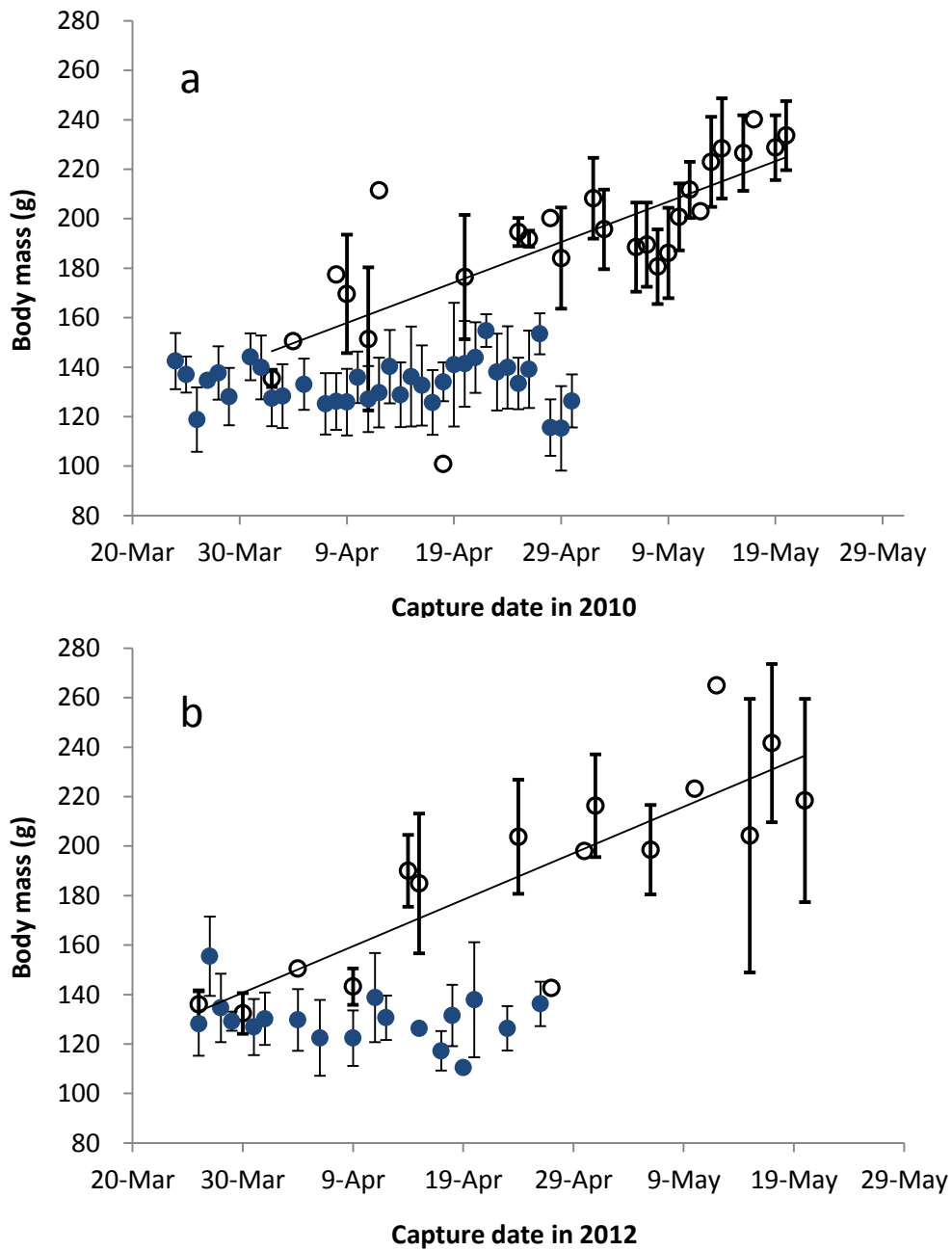


Figure A2 Body mass of great knots (mean  $\pm$  SD) in relation to capture date during spring stopover at Chongming Dongtan Nature Reserve (filled circles) in the south and at Yalu Estuarine Wetland Nature Reserve (open circles) in the north Yellow Sea in 2010 (a) and 2012 (b).